

GYKM-LS GYKM-LT Probe

All-in-one
Linear Profile Version

Linear profile GYKM series have new version of all electronics integrated—"GYKM-LT/LS". Mounting signal processing electronics to probe head, you can get a current analogue signal (4~20mA or 0~10V) proportional to a magnet position. Moreover, the GYKM-RS probe is available which GYHC, GYDC-05, and GKS-01 (with indicator) controllers etc. can be connected. Internal element is GYcRS type (P.15), the cable to the controller has the noise-immunity. (Model No.: GYKM-RS-□□□□-□)
① ③



Specifications

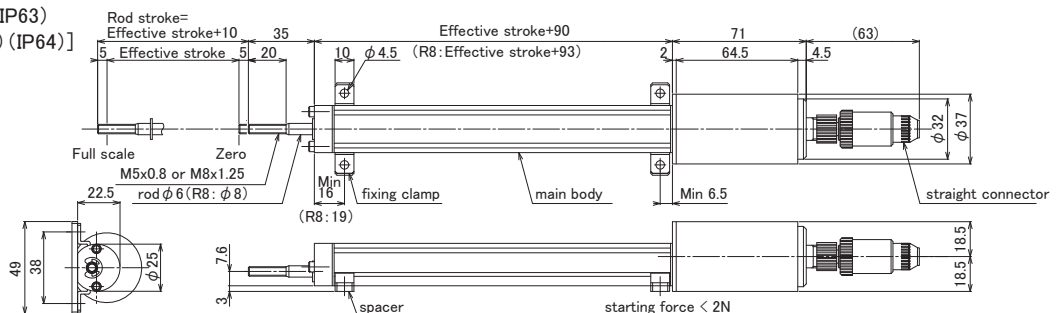
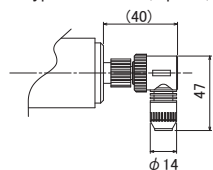
| | | |
|-------------|--------------------------|--|
| Accuracy | Non-linearity | < ±0.025%FS TYP |
| | Resolution | < 0.01%FS |
| | Repeatability | < ±0.01%FS |
| | Temp drift | < 40ppm FS/°C |
| Output | Voltage output (GYKM-LS) | 0~10V or 10~0V (output current: Max.5mA, load: Min.2kΩ) |
| | Current output (GYKM-LT) | 4~20mA or 20~4mA (load: Min.500Ω) |
| | Power supply | +24 (±2)VDC (50mA) |
| | Frequency response | Std 1kHz (depending on stroke) sampling |
| Environment | Operating Temp | 0°C~+65°C |
| | Storage Temp | -20°C~+65°C |
| | Vibration | 3G (or 40Hz 1mmPP) |
| | Shock | 10G (2msec) |
| | Protection | IP63~IP65 |

*The above mentioned accuracy applies to sensors with an effective stroke of 300mm or more.

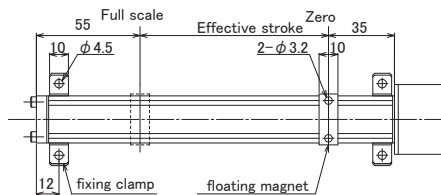
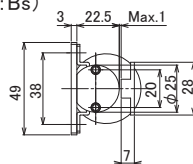
Dimensions

■ Rod φ 6 Type (Code: R) (IP63)
[Rod φ 8 Type (Code: R8) (IP64)]
(rod material: SS304)

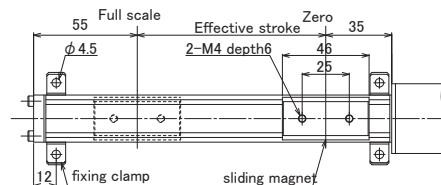
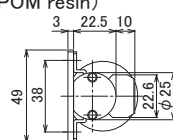
L type connector (Option)



■ Floating Magnet Type (Code: T) (IP65)
(floating magnet material: Bs)



■ Sliding Magnet Type (Code: U) (IP65)
(sliding magnet material: POM resin)



- Main body material is Al Shapes.
- The length of the cable should be less than 10m in case of using the voltage output type and 100m in case of using the current output type.
- Applied cable diameter: φ 5~φ 6
- Wire size: 0.18~0.75mm²
- Other options such as flexible rod type, please consult factory (refer P.26).

Connection

- 1 DC24V
- 2 0V
- 3 Output (Current or Voltage)
- 4 COM

※Shield should be connected with 0V at user side.

※0V and COM are connected in the head.

Model No.

GYKM-LS - □□□□ - A □ - □
GYKM-LT - □□□□ - B □ - □
① ② ③

- ① Effective stroke 15mm~2000mm
② Direction of output (toward probe tip)
D: output increase
R: output decrease
③ Magnet type
R: rod φ 6 (M5 thread) <Standard>
R2: rod φ 6 (M5 thread), IP64
R88: rod φ 8 (M8 thread)
R85: rod φ 8 (M5 thread)
T: floating magnet type
U: sliding magnet type
U-FX65: sliding magnet type with flexible rod φ 6 (M5 thread)
U2-FX88: sliding magnet type with flexible rod φ 8 (M8 thread)

• Fixing clamps are supplied.

- stroke < 600mm : 4 pcs
- 600~1000mm : 6 pcs
- 1001mm~1500mm: 8 pcs
- 1501mm~2000mm: 10 pcs

• Connector: Omron XS2C-D4S1 (straight type) or D4S2 (L type) (Material: PBT plastic)